

Detailed findings from the May 2015 questionnaire

Age range:

Paper version:	1 - 20: 6	21 - 50: 85	51+: 156
Online version:	1 - 20: 18	21 - 50: 127	51+: 105
Total:	1 - 20: 24	21 - 50: 212	51+: 261

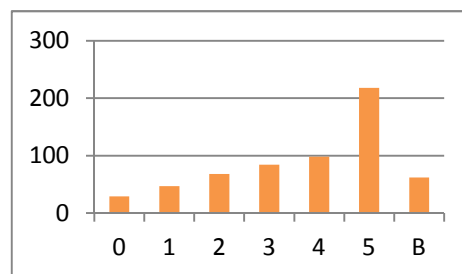
Place of Residence:

Paper version:	In Motueka: 191	Surrounding area: 65	Outside: 8
Online version:	In Motueka: 155	Surrounding area: 78	Outside: 17
Total:	In Motueka: 346	Surrounding area: 143	Outside: 25

Commentary: As expected, the paper version was answered more by "local", older people. Many of the online surveys were used by younger people, more of whom lived outside the area.

1. Build a new, larger library (or expand/modernise the existing one)

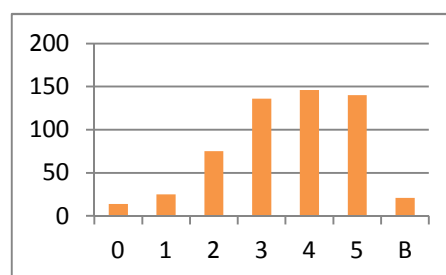
	Online	Paper	Total	%
0:	8	21	29	5.3
1:	18	29	47	8.6
2:	47	21	68	12.5
3:	35	49	84	15.4
4:	63	35	98	18.0
5:	96	122	218	40.1
Bonus:		62		



Commentary: A small disparity between the results from the paper version (which were much more strongly in favour of this) and those from the online version at the top end of the scale. Suggested reason - Those living near Motueka and older people want a new library, while those living away and younger see less need for it. Some respondents may have wanted only a new library, or only an expansion of the existing one, so the answer is not conclusive on either case. The high number of bonuses suggest support for this idea is passionate.

2. Create a more extensive network of walking/bike paths

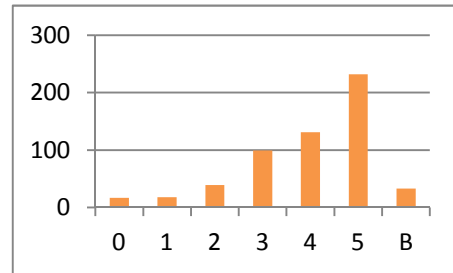
	Online	Paper	Total	%
0:	2	12	14	2.6
1:	10	15	25	4.7
2:	35	40	75	14.0
3:	54	82	136	25.4
4:	92	54	146	27.2
5:	74	66	140	26.1
Bonus:		21		



Commentary: This was an unambiguous question and received strong support, though not as passionate as many other questions.

3. Provide a youth-focused workplace training centre

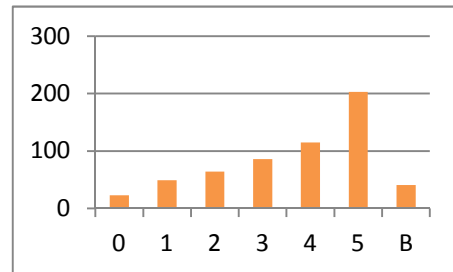
	Online	Paper	Total	%
0:	7	10	17	3.2
1:	8	10	18	3.3
2:	19	20	39	7.3
3:	42	57	99	18.4
4:	65	66	131	24.4
5:	126	106	232	43.3
Bonus:		33		



Commentary: A very strong positive response, with high priority given. No detail on how such a centre should be set up, and by whom, and its relationship with, for example, the high school's trade academy.

4. Provide public transport services to Nelson and Kaiteriteri

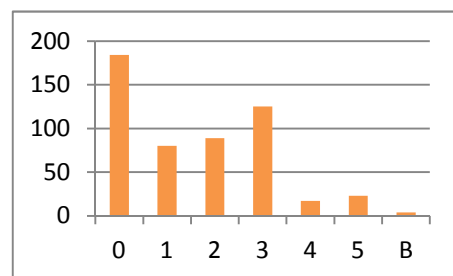
	Online	Paper	Total	%
0:	4	19	23	4.3
1:	27	22	49	9.1
2:	42	22	64	11.9
3:	41	45	86	15.9
4:	58	57	115	21.3
5:	95	108	203	37.6
Bonus:		41		



Commentary: Another clear trend line. This question has several ambiguities or uncertainties attached. Some people may be keen on a service with Nelson but not Kaiteriteri, others vice versa. And no questions are asked about who would run the service - private sector or Council. Furthermore, some may think it's needed but would never or rarely use it themselves.

5. Motueka is fine as it is, so no big changes needed

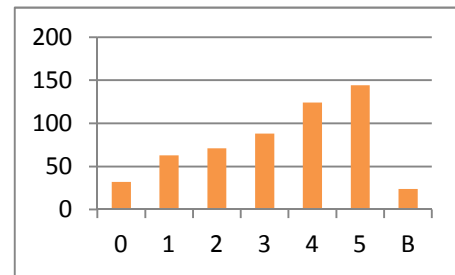
	Online	Paper	Total	%
0:	68	116	184	35.5
1:	39	41	80	15.4
2:	58	31	89	17.2
3:	84	41	125	24.1
4:	8	9	17	3.3
5:	8	15	23	4.4
Bonus:		4		



Commentary: This question was included to test the attitude of residents to change and current satisfaction levels. A very small number of people are happy with the town as it is, but many say either a few or many large changes are needed to address problem areas. 35% are very unhappy with the state of the town. Most people will not be surprised by this result - it's just a matter of degree, and how fundamental the perceived problems are.

6. Plant more trees on reserve land that have edible fruits, nuts etc

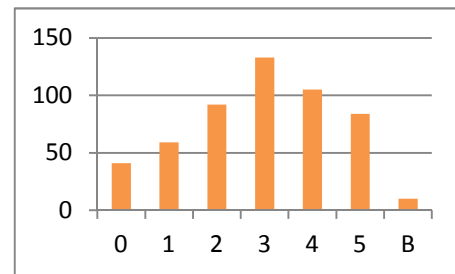
	Online	Paper	Total	%
0:	5	27	32	6.1
1:	34	29	63	12.1
2:	43	28	71	13.6
3:	47	41	88	16.5
4:	75	49	124	23.8
5:	61	83	144	27.6
Bonus:		24		



Commentary: This result is a little surprising, given poorer ratings for other questions in the survey about trees. Although not as strong a positive result as others, it shows a consistent trend and has quite a high number of high-priority bonus points. 18 people skipped this question.

7. Move the wastewater (sewage) plant to higher ground

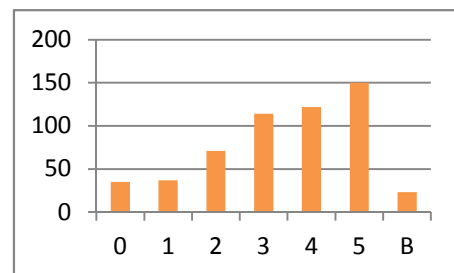
	Online	Paper	Total	%
0:	12	29	41	8.0
1:	28	31	59	11.4
2:	57	35	92	17.9
3:	66	67	133	25.9
4:	52	53	105	20.4
5:	50	34	84	16.4
Bonus:		10		



Commentary: 26 people declined to answer this question. Clearly, each answer will reflect the respondent's perception of how great a threat the low altitude of the current ponds are, and how immediate that threat is to their own life horizon. The answer suggests some concern but not pressing for most, and of little or no concern to quite a few.

8. Promote Motueka for winter holidaying

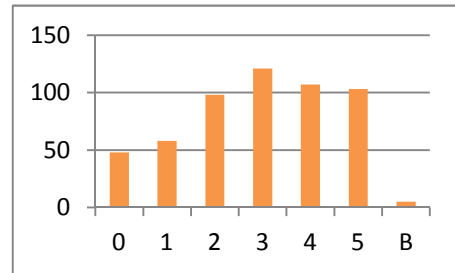
	Online	Paper	Total	%
0:	11	24	35	6.6
1:	17	20	37	7.0
2:	36	35	71	13.4
3:	53	61	114	21.6
4:	65	57	122	23.1
5:	83	67	150	28.3
Bonus:		23		



Commentary: Not a strong endorsement of this idea, but on average most think it is worthwhile. No ideas provided for what activities or facilities could be available to base such a promotion around.

9. More extensive tree plantings generally around Motueka streets

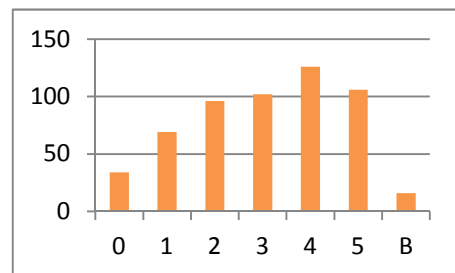
	Online	Paper	Total	%
0:	18	30	48	9.0
1:	21	37	58	10.8
2:	51	47	98	18.3
3:	56	65	121	22.6
4:	66	41	107	20.0
5:	53	50	103	19.3
Bonus:		5		



Commentary: Quite mixed results showing a slight preference but also significant opposition.

10. Upgrade the salt water pool

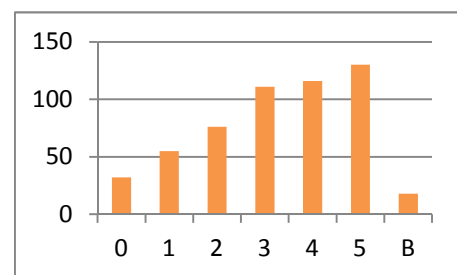
	Online	Paper	Total	%
0:	8	26	34	6.4
1:	39	30	69	12.9
2:	58	38	96	18.0
3:	44	58	102	19.1
4:	68	58	126	23.6
5:	48	58	106	19.9
Bonus:		16		



Commentary: A weak level of overall agreement with this proposition. It would not be clear to many what sort of aspects of the pool would be upgraded - roofing it? smoothing the concrete? cleaning the water more often? Also, some people against this may be happy with the way it is and use it often anyhow, while others may look at the benefits to more tourism or to community amenity generally, or even to the area around it to make a better picnic or recreation spot.

11. Restore the historic wharf on Motueka Quay as a tourist attraction

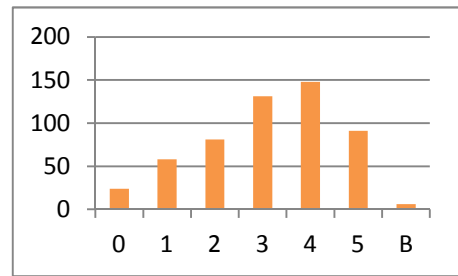
	Online	Paper	Total	%
0:	8	24	32	6.2
1:	27	28	55	10.6
2:	37	39	76	14.6
3:	56	55	111	21.3
4:	65	51	116	22.3
5:	72	58	130	25.0
Bonus:		18		



Commentary: About 24 people skipped this question. The online survey (of younger people and more living away from Motueka) gave a clearer positive trend than the paper version, which was remarkably unenthusiastic about this idea.

12. Create a picnic area north of the Motueka River bridge

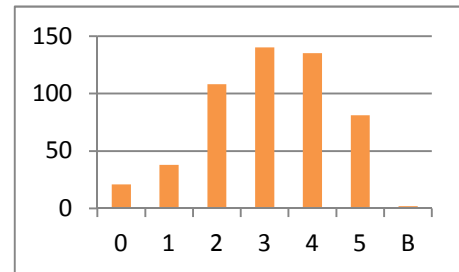
	Online	Paper	Total	%
0:	5	19	24	4.5
1:	21	37	58	10.9
2:	44	37	81	15.2
3:	56	75	131	24.6
4:	95	53	148	27.8
5:	44	47	91	17.1
Bonus:		6		



Commentary: It is assumed most people knew the area proposed for this facility. A lukewarm positive response, with not many passionate about it.

13. Improve and extend the recreational park areas around town

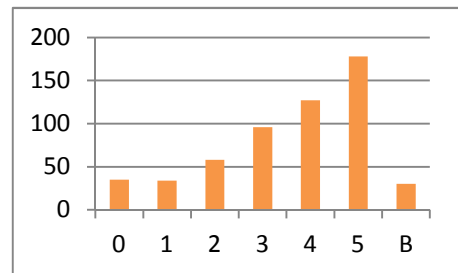
	Online	Paper	Total	%
0:	7	14	21	4.0
1:	10	28	38	7.3
2:	60	48	108	20.7
3:	60	80	140	26.8
4:	79	56	135	25.8
5:	47	34	81	15.5
Bonus:		2		



Commentary: Skipped by 17 people. Again, not a strong level of support. Quite possibly many people are happy with the existing local environment.

14. A community centre (hub) offering a range of facilities in one place

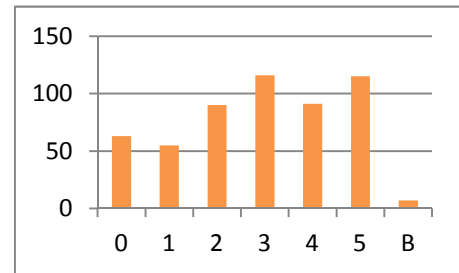
	Online	Paper	Total	%
0:	11	24	35	6.6
1:	16	18	34	6.4
2:	32	26	58	11.0
3:	29	67	96	18.2
4:	71	56	127	24.1
5:	104	74	178	33.7
Bonus:		30		



Commentary: Twelve did not answer. As expected, given recent publicity about a hub in Decks Reserve, there were a significant group against this idea, but also a number strongly for it (the number of bonus points). Many people would not know what facilities such a hub would include, or even where it would go - the space allocated for the questions in this survey did not permit a detailed description or explanation.

15. Encourage more Maori cultural features in the town

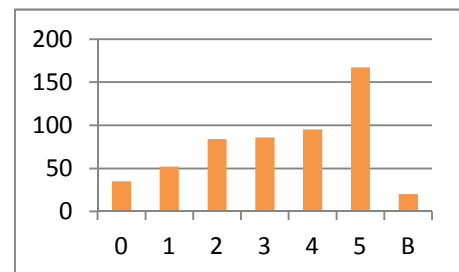
	Online	Paper	Total	%
0:	23	40	63	11.9
1:	26	29	55	10.4
2:	52	38	90	17.0
3:	43	73	116	21.9
4:	52	39	91	17.2
5:	67	48	115	21.7
Bonus:		7		



Commentary: Not unexpectedly, this question drew mixed responses, some of which may sadly be attributable to a degree of pakeha intolerance to Maori cultural expression outside of the marae. Few saw it as a very high priority (bonus points).

16. Make Motueka a model town for eco-friendly neighbourhoods

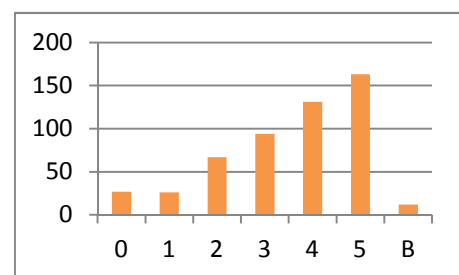
	Online	Paper	Total	%
0:	12	23	35	6.7
1:	33	19	52	10.0
2:	42	42	84	16.2
3:	33	53	86	16.6
4:	48	47	95	18.3
5:	95	72	167	32.2
Bonus:		20		



Commentary: 21 people skipped this question. A relatively large number of people saw this as a very high priority, with most of the rest being supportive of the idea but without the same level of conviction. There is no suggestion of how such a policy or project would be implemented and under whose overview.

17. A tertiary educational facility for local primary industries

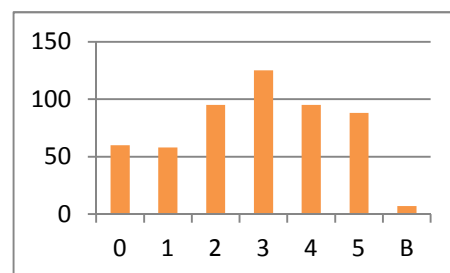
	Online	Paper	Total	%
0:	8	19	27	5.3
1:	10	16	26	5.1
2:	31	36	67	13.2
3:	43	51	94	18.5
4:	67	64	131	25.8
5:	103	60	163	32.1
Bonus:		12		



Commentary: 32 people skipped this question. Perhaps some may not be aware of what such a facility would look like and who would operate it. A fairly strong result, and there was more enthusiasm for it among the people surveyed online, suggesting a better understanding by the younger demographic as to what the benefits of such a facility may be.

18. Develop and use Te Awhina Marae for more tourist attractions

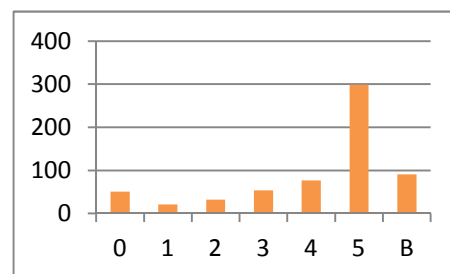
	Online	Paper	Total	%
0:	18	42	60	11.5
1:	27	31	58	11.1
2:	50	45	95	18.2
3:	52	73	125	24.0
4:	60	35	95	18.2
5:	55	33	88	16.9
Bonus:		7		



Commentary: 19 skipped this question. No strong conclusion can be reached from this result. Some comments passed back suggested it was up to Maori to decide this, not the rest of the town.

19. Build a covered aquatic centre (swimming pool)

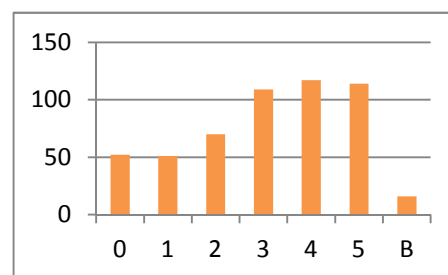
	Online	Paper	Total	%
0:	17	34	51	9.6
1:	9	12	21	3.9
2:	10	22	32	6.0
3:	23	31	54	10.1
4:	44	33	77	14.4
5:	159	140	299	56.0
Bonus:		91		



Commentary: Apart from a small blip of those strongly against such a facility, the result is totally clear. This project is passionately supported by the largest number of people in terms of the number of bonus points allocated. Some of those against it may have assumed that the proposed facility would be as voted on in a referendum about 7 years ago for an expensive facility, and were therefore against such expenditure when they may not benefit from it. Other cheaper options were not offered in this survey.

20. Further develop the marina and boating industrial area near Talley's

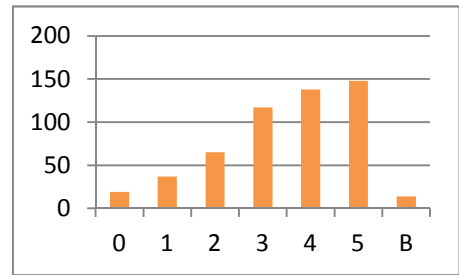
	Online	Paper	Total	%
0:	13	39	52	10.1
1:	16	35	51	9.9
2:	41	29	70	13.6
3:	47	62	109	21.2
4:	68	49	117	22.8
5:	77	47	114	22.2
Bonus:		16		



Commentary: 37 people skipped this question, possibly because they may not have thought beyond just the marina as a development for the area as a whole. Of interest is the markedly different opinions of those who voted online and those using the paper version, with the online ones significantly more in favour. Overall, there is moderate support for this development idea.

21. Create added-value businesses around existing primary industries

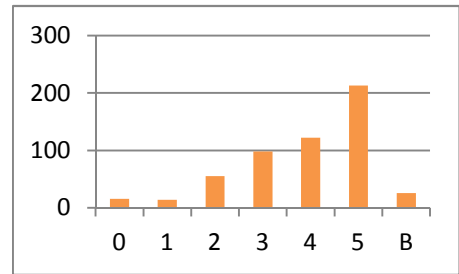
	Online	Paper	Total	%
0:	4	15	19	3.6
1:	14	23	37	7.1
2:	33	32	65	12.4
3:	47	70	117	22.3
4:	66	72	138	26.3
5:	96	52	148	28.2
Bonus:		14		



Commentary: 16 people skipped this question. There is clear support for this idea. More work would need to be done to find ways of actually implementing it.

22. Be more self-sufficient with power, sewage, food, water collection

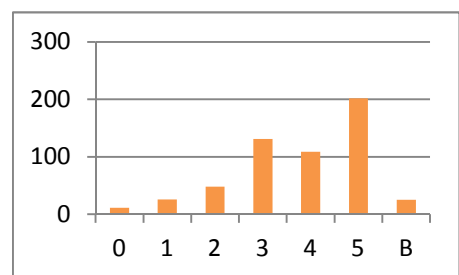
	Online	Paper	Total	%
0:	8	8	16	3.1
1:	6	8	14	2.7
2:	29	26	55	10.6
3:	44	54	98	18.9
4:	55	67	122	23.6
5:	118	105	213	41.1
Bonus:		26		



Commentary: 22 people skipped this question. We found quite a few people who were filling this out at the museum booth wanted clarification as to what it meant, so we can assume that others answering at home may also have been uncertain. However, there is a very clear message here that most people would like council to move in this direction.

23. Improved flood protection (including the river stop banks)

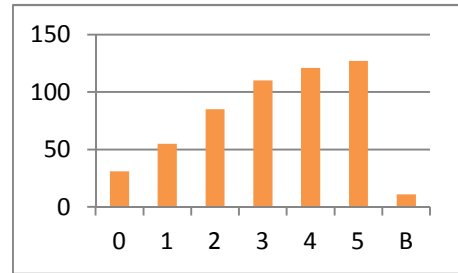
	Online	Paper	Total	%
0:	3	8	11	2.1
1:	10	16	26	4.9
2:	20	28	48	9.1
3:	49	82	131	24.9
4:	57	52	109	20.7
5:	121	81	202	38.3
Bonus:		25		



Commentary: This result is also clear - people are concerned about the potential for a major flood. Several people spoken to at the museum booth were unaware of the stopbank controversy. 13 people skipped this question.

24. Create a technology and business hub for start-up businesses

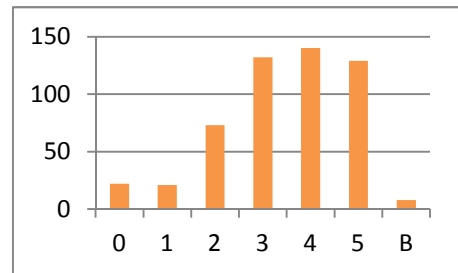
	Online	Paper	Total	%
0:	8	23	31	5.9
1:	28	27	55	10.4
2:	34	51	85	16.1
3:	52	58	110	20.8
4:	59	62	121	22.9
5:	79	48	127	24.0
Bonus:		11		



Commentary: Although there was general support for this idea, there was a marked difference of opinion between the (mainly younger) online results and the paper results. With no attempt made to explain what a technology or business hub would do, some people - particularly older ones - may have been unaware of how it would operate.

25. Improve the quality and usefulness of Thorp's Bush

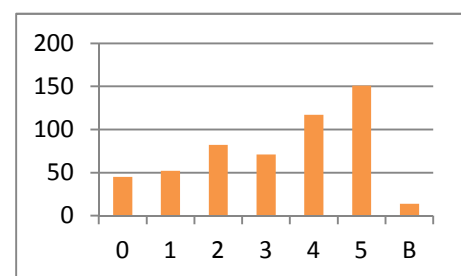
	Online	Paper	Total	%
0:	6	16	22	4.3
1:	8	13	21	4.1
2:	35	38	73	14.1
3:	57	75	132	25.5
4:	88	52	140	27.1
5:	65	64	129	25.0
Bonus:		8		



Commentary: 23 people skipped this question, possibly because of its ambiguity with the use of words "quality" and "usefulness". Several people commented in private that the quality would improve by keeping people out of the area and letting its natural state be enhanced; others said it would be more useful if community activities were put on there and some of the thick bush removed to discourage antisocial behaviours. We now consider that the answers to this question are unreliable without a further, more detailed survey.

26. Develop a major, unique visitor attraction that Motueka is known for

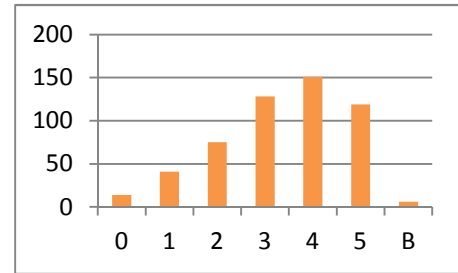
	Online	Paper	Total	%
0:	15	30	45	8.7
1:	21	31	52	10.0
2:	39	43	82	15.8
3:	31	40	71	13.7
4:	67	50	117	22.6
5:	86	65	151	29.2
Bonus:		14		



Commentary: 22 people skipped this question. It was not made clear whether this "attraction" would be an event, a visual feature or a facility. Nevertheless, there is general support for this idea, though not passionate.

27. Broaden and develop local craft industries

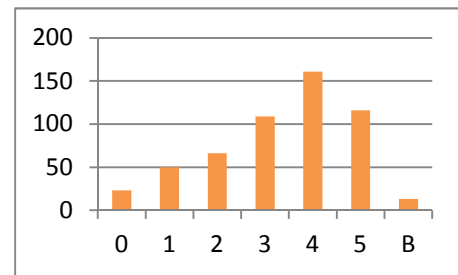
	Online	Paper	Total	%
0:	2	12	14	2.7
1:	22	19	41	7.8
2:	30	45	75	14.2
3:	51	77	128	24.2
4:	88	63	151	28.6
5:	66	53	119	22.5
Bonus:		6		



Commentary: There is general support for this idea, though not a high priority. As with many other questions, there is no obvious way to implement this.

28. Restore/upgrade the Riwaka wharf linked to a coastal walkway

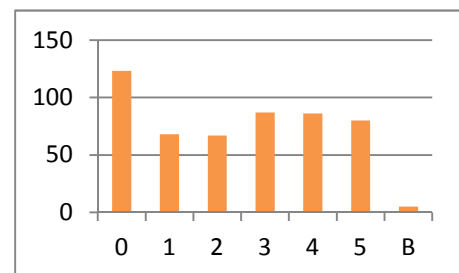
	Online	Paper	Total	%
0:	4	19	23	4.4
1:	24	26	50	9.5
2:	30	36	66	12.6
3:	42	67	109	20.8
4:	92	69	161	30.7
5:	67	49	116	22.1
Bonus:		13		



Commentary: 15 people skipped this question. It was the first question of two that focus specifically on possible projects outside of Motueka town. The support is quite strong, but not passionate.

29. Plant an avenue of trees along the length of High Street

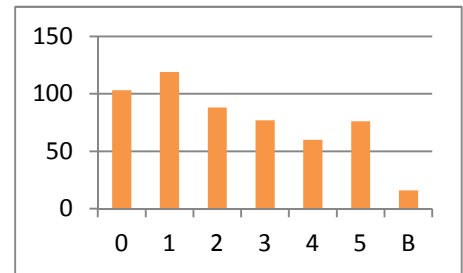
	Online	Paper	Total	%
0:	50	73	123	24.1
1:	31	37	68	13.3
2:	39	28	67	13.1
3:	39	48	87	17.0
4:	51	35	86	16.8
5:	46	34	80	15.7
Bonus:		5		



Commentary: 29 skipped this question; was this large number of abstainers due to such a level of mixed opinion? This was one of the few items in the survey that had no clear result, apart from there being little or no appetite for such a project.

30. Encourage time banks, barter system, non-dollar currencies

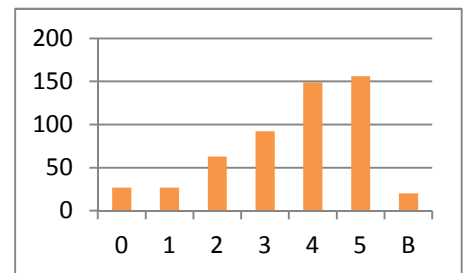
	Online	Paper	Total	%
0:	41	62	103	19.7
1:	71	48	119	22.8
2:	46	42	88	16.8
3:	32	45	77	14.7
4:	32	28	60	11.5
5:	34	42	76	14.5
Bonus:		16		



Commentary: 17 people skipped this question. The word "Encourage" may have affected the responses. Clearly most people are not interested in this idea, but their vote may have been to record that they would not use it personally. Some would say that it was a good thing to promote, but not for them; such people could easily vote either way within the wording of the question. The result should not be considered strongly reliable, but advocates for such systems should still be encouraged that a good number of people support alternative currencies for reasons unknown.

31. Organise one or two large 'signature events' repeated each year

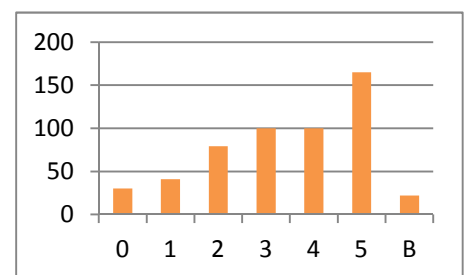
	Online	Paper	Total	%
0:	11	16	27	5.3
1:	6	21	27	5.3
2:	26	37	63	12.2
3:	41	51	92	17.9
4:	83	66	149	29.0
5:	89	67	156	30.4
Bonus:		20		



Commentary: 26 people skipped this question. The support for this initiative is strong, although there is no indication of the nature of the event(s) and who would organise them.

32. Fix environmental risks before promoting more tourism and industry

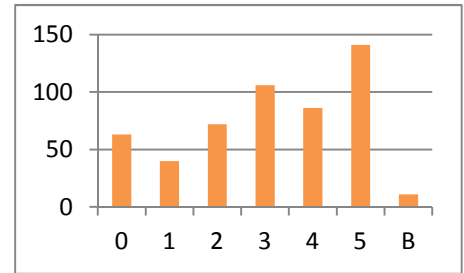
	Online	Paper	Total	%
0:	19	11	30	5.8
1:	19	22	41	8.0
2:	33	46	79	15.3
3:	47	53	100	19.4
4:	50	50	100	19.4
5:	88	77	165	32.0
Bonus:		22		



Commentary: This question was included to test the attitude to hard-out development and growth versus "environment first". There is quite strong acceptance that the environment is at least as important, or even more important, than industry and tourism. However, people were left to their own opinions as to what the present "environmental risks" actually are. Does it mean protecting against sea level rises? Or reducing horticultural sprays? Or raising stop banks? Purifying water? Digging more stormwater drains? 25 people skipped this question.

33. Increase the targeted rate to \$1/week to run only Motueka projects

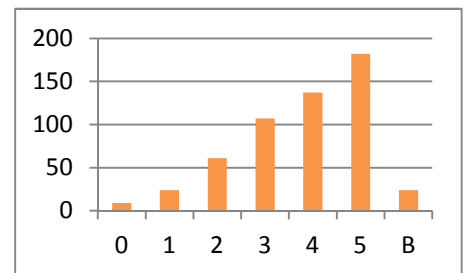
	Online	Paper	Total	%
0:	23	40	63	12.4
1:	15	25	40	7.9
2:	34	38	72	14.2
3:	45	61	106	20.9
4:	43	43	86	16.9
5:	96	45	141	27.8
Bonus:		11		



Commentary: This is quite a surprising result, given that it is commonly assumed that any suggestion of a rates increase draws an automatic negative response in most of the community. However, it is probably the final provision - that it is used only on Motueka projects - that makes the proposal acceptable to a smallish majority of people. 32 people skipped the question, and based on several conversations at the High Street booth it is assumed that a lot of people don't know what a targeted rate is (especially those who do not pay rates directly) and that one is already in place.

34. The community organise more activities in town for youth

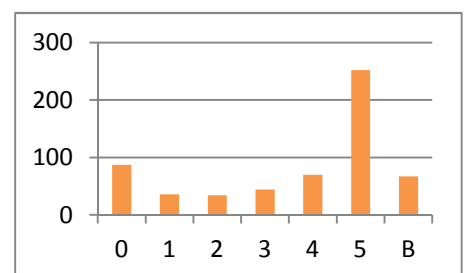
	Online	Paper	Total	%
0:	6	3	9	1.7
1:	12	12	24	4.6
2:	27	34	61	11.7
3:	47	60	107	20.6
4:	63	74	137	26.3
5:	101	81	182	35.0
Bonus:		24		



Commentary: This result shows very strong support for this idea. There is no indication as to who or what organisation should carry this out.

35. Install traffic lights at the High St - Pah St / Greenwood St intersection

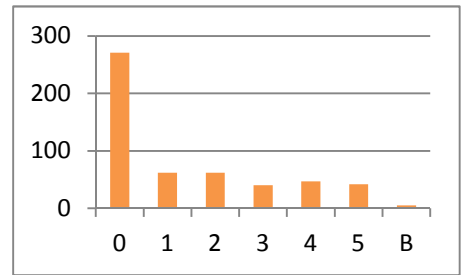
	Online	Paper	Total	%
0:	39	48	87	16.6
1:	17	19	36	6.9
2:	20	14	34	6.5
3:	21	23	44	8.4
4:	28	42	70	13.4
5:	131	121	252	48.2
Bonus:		67		



Commentary: This question showed the passionate interest Motueka people have in traffic management in High Street. People are either strongly for or against a lights proposal. In verbal conversations and on Facebook, some of those voting against would want to see a roundabout installed rather than lights. However, the evidence (and especially the number of bonus points allocated) shows most people very strongly want lights. 17 people skipped this question.

36. Develop a shopping mall, including retail chains

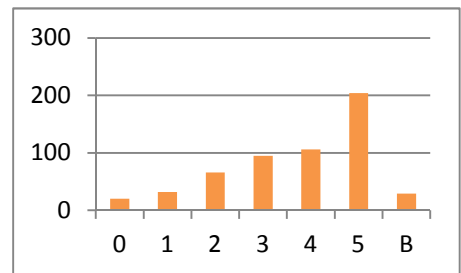
	Online	Paper	Total	%
0:	127	144	271	51.7
1:	29	33	62	11.8
2:	31	31	62	11.8
3:	17	23	40	7.6
4:	26	21	47	9.0
5:	26	16	42	8.0
Bonus:		5		



Commentary: This is probably the most conclusive result of the poll. The only thing that could (and perhaps should) have modified this would have been leaving out the comment about "retail chains". Perhaps some people may have favoured the suggestion if the mall tenants had been smaller, boutique shops, even local ones.

37. Encourage all new housing to be self-sufficient in power, water

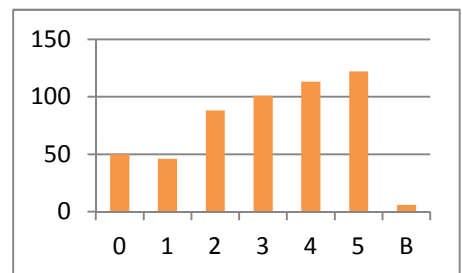
	Online	Paper	Total	%
0:	8	12	20	3.8
1:	16	16	32	6.1
2:	38	28	66	12.6
3:	48	47	95	18.2
4:	47	59	106	20.3
5:	99	105	204	39.0
Bonus:		29		



Commentary: The result here is quite strong and very similar to that for Question 22, which is quite understandable. Perhaps this question was somewhat redundant. (By this stage in the online survey, 11 people seem to have dropped out of answering questions, or were skipping them. We don't know if they are the same 11, but the number seems too consistent to be random.)

38. Make Motueka known as a great area to retire comfortably to

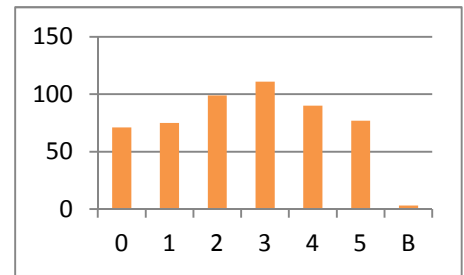
	Online	Paper	Total	%
0:	25	25	50	9.6
1:	20	26	46	8.8
2:	47	41	88	16.9
3:	48	53	101	19.4
4:	55	58	113	21.7
5:	61	61	122	23.5
Bonus:		6		



Commentary: Looking back, the wording used in this question is too ambiguous to make the result reliable, and this is probably reflected in the weak level of support. Does a Yes mean it should be promoted as a retirement town more than as a place for young people? Or that both could happen at once? Or just leave it as it is, already a retirement place?

39. Commission large public art works - murals, sculptures etc

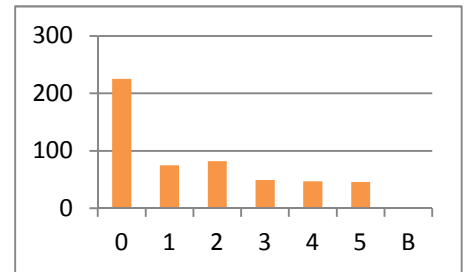
	Online	Paper	Total	%
0:	24	47	71	13.6
1:	36	39	75	14.3
2:	50	49	99	18.9
3:	60	51	111	21.2
4:	50	40	90	17.2
5:	36	41	77	14.7
Bonus:		3		



Commentary: Given that the question is quite clear, this results suggests there is no strong desire to follow this sort of development path.

40. Attract a large retail chain like Smith City to Motueka

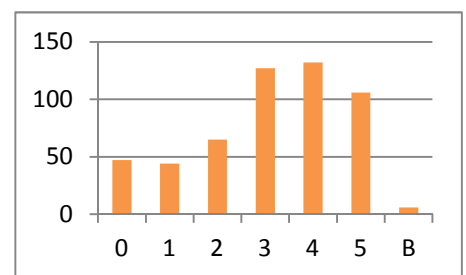
	Online	Paper	Total	%
0:	96	129	225	2.6
1:	31	44	75	4.7
2:	54	28	82	14.0
3:	21	28	49	25.4
4:	24	23	47	27.2
5:	30	16	46	26.1
Bonus:		1		



Commentary: This result is similar to that in Question 36, about a shopping mall, only not quite so strongly against. Perhaps some people would be less opposed to such a retailer if it was not in a central mall but possibly on the commercial outskirts.

41. More extensive visitor promotions and marketing

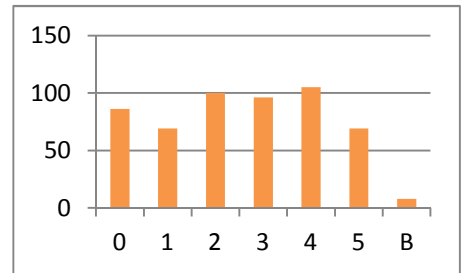
	Online	Paper	Total	%
0:	15	32	47	9.0
1:	18	26	44	8.4
2:	30	35	65	12.4
3:	54	73	127	24.4
4:	66	66	132	25.3
5:	73	33	106	20.3
Bonus:		6		



Commentary: This idea has solid support, but with no passion attached. Perhaps people are happy enough with present marketing, or maybe think the number of visitors we host each year is not far off being just about right.

42. More development in Riwaka, Lower Moutere, Tasman, Ngatimoti

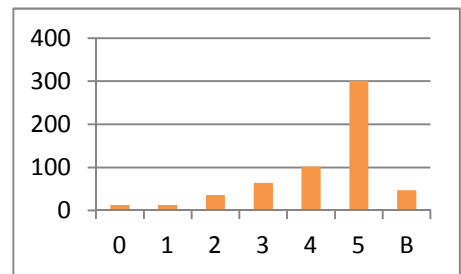
	Online	Paper	Total	%
0:	29	57	86	16.4
1:	33	36	69	13.1
2:	56	44	100	19.0
3:	44	52	96	18.3
4:	59	46	105	20.0
5:	35	34	69	13.1
Bonus:		8		



Commentary: There is nothing conclusive in this result. This may be because the option is rather too open. Some people may have thought this meant some great residential or industrial development in one of these places, others may have thought it would just be a bit more council money spent in the area.

43. Install high-speed broadband throughout the town and surrounds

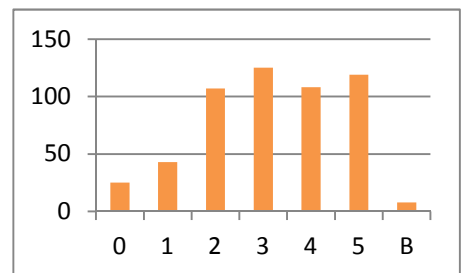
	Online	Paper	Total	%
0:	1	12	13	2.4
1:	4	9	13	2.4
2:	17	19	36	6.8
3:	22	42	64	12.1
4:	47	55	102	19.3
5:	165	136	301	56.9
Bonus:		47		



Commentary: Probably the clearest result of the survey, showing overwhelming support. The only qualification one could add may be that some people voted according to whether or not they would use it themselves, and some may have worried about who would pay for it. As you would expect, the support from online voters was stronger than that from hard-copy voters.

44. Expand and add more community gardens

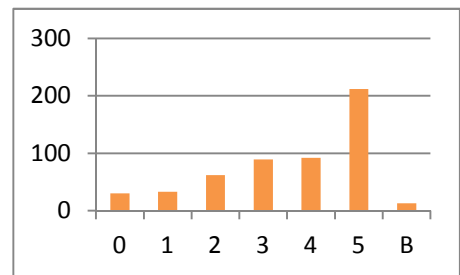
	Online	Paper	Total	%
0:	9	16	25	4.7
1:	19	24	43	8.6
2:	69	38	107	20.3
3:	55	70	125	23.7
4:	56	52	108	20.5
5:	48	71	119	22.6
Bonus:		8		



Commentary: This question was unambiguous and drew a response which was mainly supportive of community gardens but not with very high priority.

45. Encourage pakeha and Maori to work together on common projects

	Online	Paper	Total	%
0:	8	22	30	5.8
1:	20	13	33	6.4
2:	35	27	62	12.0
3:	34	55	89	17.2
4:	51	41	92	17.8
5:	108	104	212	40.9
Bonus:		13		



Commentary: A person's answer to this question would likely be shaped to a degree by their knowledge of the extent to which Maori and pakeha are currently working together (or not). Also on what would be "common projects" (and therefore on what projects would be for one group only). Regardless, there is clear support for the idea that we should work better together. 22 people skipped this question.